

C-27J Spartan: Beyond the Tactical Airlifter



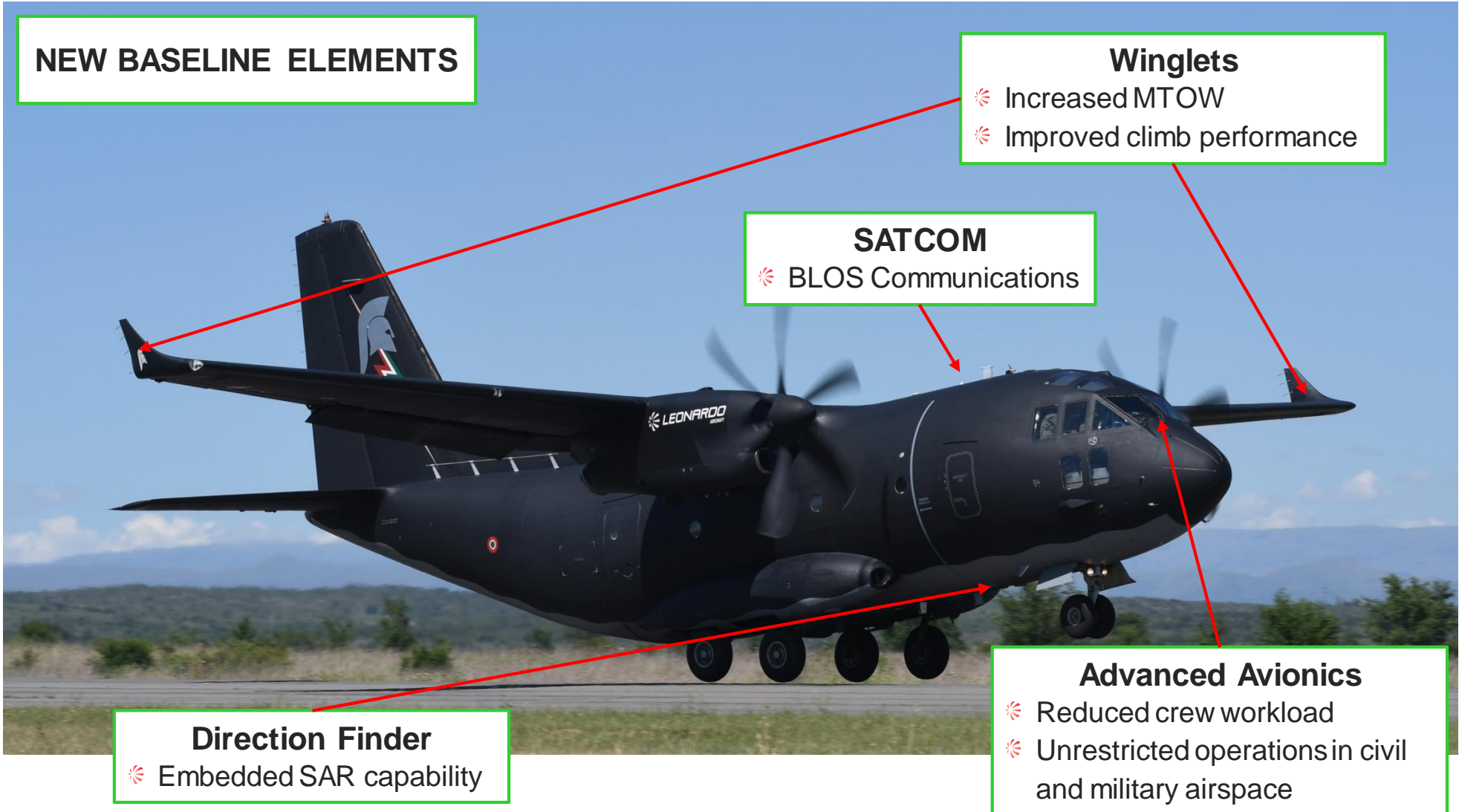
1st December 2021

© 2021 – LEONARDO S.p.A
ALL RIGHTS RESERVED

This document contains information of a proprietary nature. Its copyright is vested in Leonardo S.p.A. The contents may not be used for purpose other than for which it has been supplied and may not be reproduced, nor may be used by, or its contents divulged to, any other person without the prior written permission of Leonardo S.p.A.



The Next Generation C-27J Spartan...



NEW BASELINE ELEMENTS

Winglets

- ✦ Increased MTOW
- ✦ Improved climb performance

SATCOM

- ✦ BLOS Communications

Direction Finder

- ✦ Embedded SAR capability

Advanced Avionics

- ✦ Reduced crew workload
- ✦ Unrestricted operations in civil and military airspace



...and Its Unparalleled Characteristics

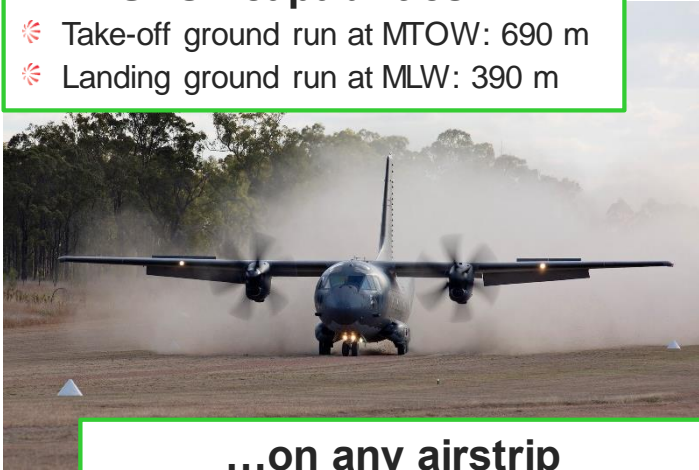


Outstanding performances

- ✦ Max cruise speed: 325 kt
- ✦ Service ceiling: 30,000 ft
- ✦ Max range: 3,160 NM
- ✦ Climb to 10,000 ft: < 6 min

STOL capabilities...

- ✦ Take-off ground run at MTOW: 690 m
- ✦ Landing ground run at MLW: 390 m



...on any airstrip

- ✦ Minimum airstrip width: 12.1 m
- ✦ Semi-prepared airstrips compatibility
- ✦ APU for autonomous operations



Ruggedness and availability

- ✦ Battlefield proven in the most difficult scenarios

Easy loading/unloading

- ✦ Variable cargo bay floor height and pitch
- ✦ Cargo Handling System



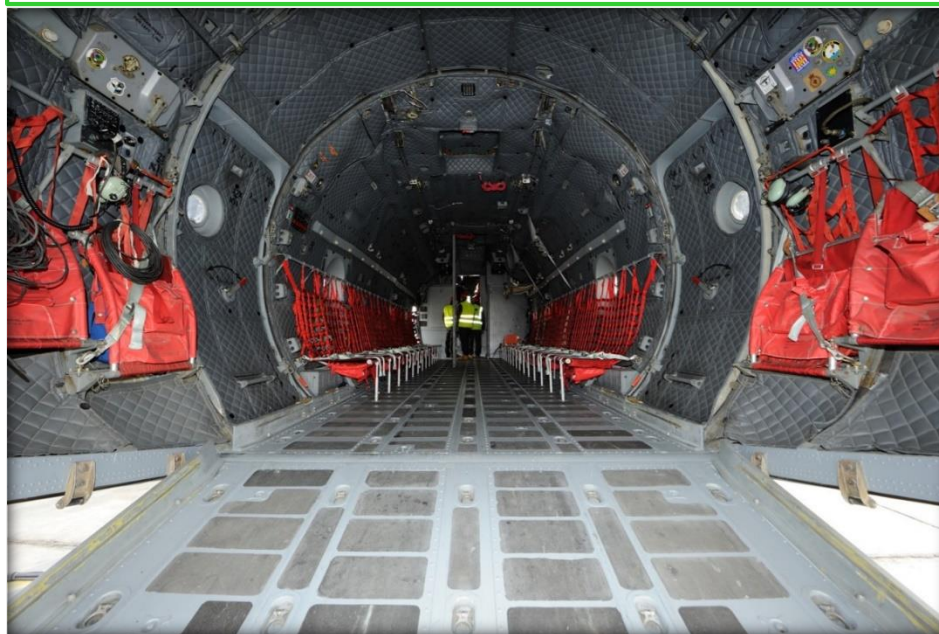
Mission suitability

- ✦ Optimized for tactical transport tasks
- ✦ Ideal for SOF support

Outstanding Versatility

Optimized cargo box

- ✦ 2.45 m wide x 2.25 m high
- ✦ Compatibility with 88" x 108" pallets up to 83" high
- ✦ Max pallets load: 3 x (88" x 108") + 1 x (88" x 54")



Mission kits

Modular elements for maximum configuration flexibility



Palletized modules

Based on 88" x 108" pallets, allowing roll-on / roll-off installation of complex systems



Basic Transport/Airdrop Tasks

Baseline **MISSION KITS** for **BUILT-IN VERSATILITY** in the traditional tactical transport tasks

Cargo Airdrop



up to **9,000 kg**
by pallet (bundles, LAPES, combat off load)

Troop Transport



up to **60** troopers

Cargo Transport

up to **11,300 kg**
payload (pallets, containers, vehicles, equipment)



Paratroopers Airdrop

up to **46** paratroopers



MEDEVAC

up to **36** stretchers +
6 medical attendants





Additional Transport/Airdrop Tasks

Expanded mission portfolio for typical
DUAL USE ROLES through
ADDITIONAL MISSION KITS and
PALLETIZED MODULES

Passengers Transport (palletized)



up to **27** civil passengers

Bio Containment (mission kit)



up to **2** patients with
infectious diseases

Basic Fire-Fighting (mission kit)

up to **6,000 l**
water or retardant



VIP Transport (palletized)

up to **6** VIP +
18 civil passengers



Special MEDEVAC (mission kit)

up to **2** intensive care units +
up to **24** stretchers +
6 medical attendants





An Invaluable Asset for Emergency Response

“Haiyan” typhoon – Philippines, 2013



Earthquake – Ecuador, 2016



Wildfires – Australia, 2019



COVID-19 – Worldwide, 2020



Beyond Transport Missions

Palletized modules

- ✦ Mission management system
- ✦ Tactical communications packages
- ✦ Crew comfort facilities
- ✦ Specialized equipment



Fixed elements

- ✦ Sensors
- ✦ Communications antennas
- ✦ Wing hardpoints



C-27J Multi-Mission

- ✦ C3ISR
- ✦ ASUW
- ✦ ASW
- ✦ CAS
- ✦ Advanced Fire-Fighting

**RETAINS ALL C-27J SPARTAN
TRANSPORT / AIRDROP CAPABILITIES**



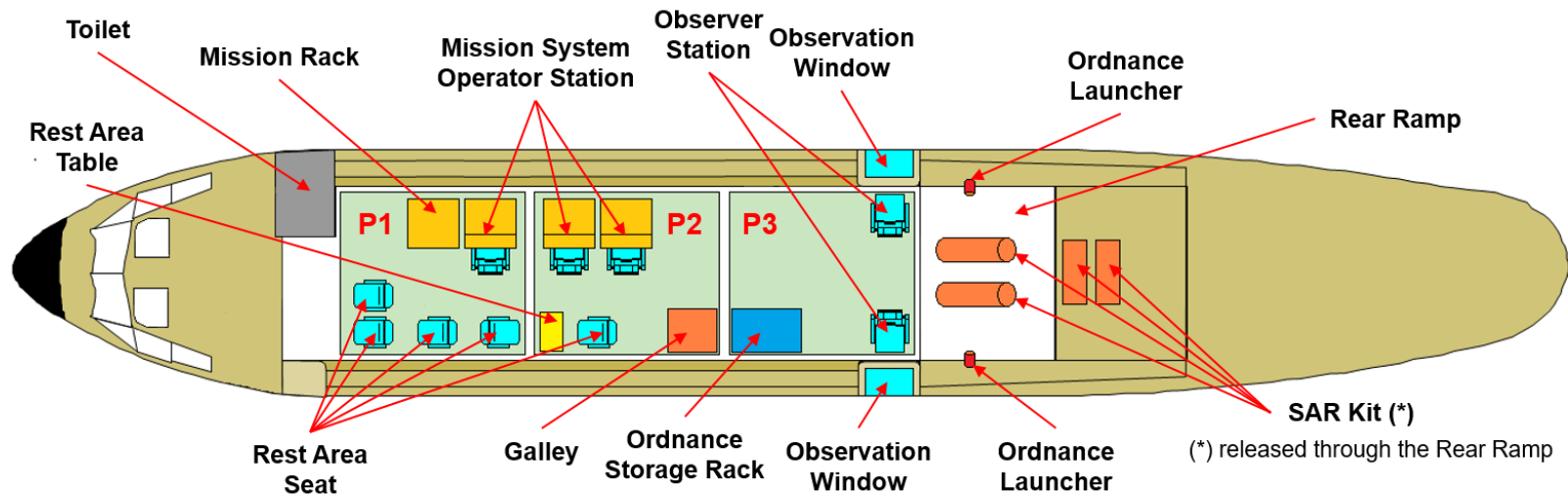


C3ISR Configuration



- Other features**
- ☄ Observation windows
 - ☄ SAR kits

- Main sensors**
- ☄ Search radar
 - ☄ Electro-Optical turret
 - ☄ AIS



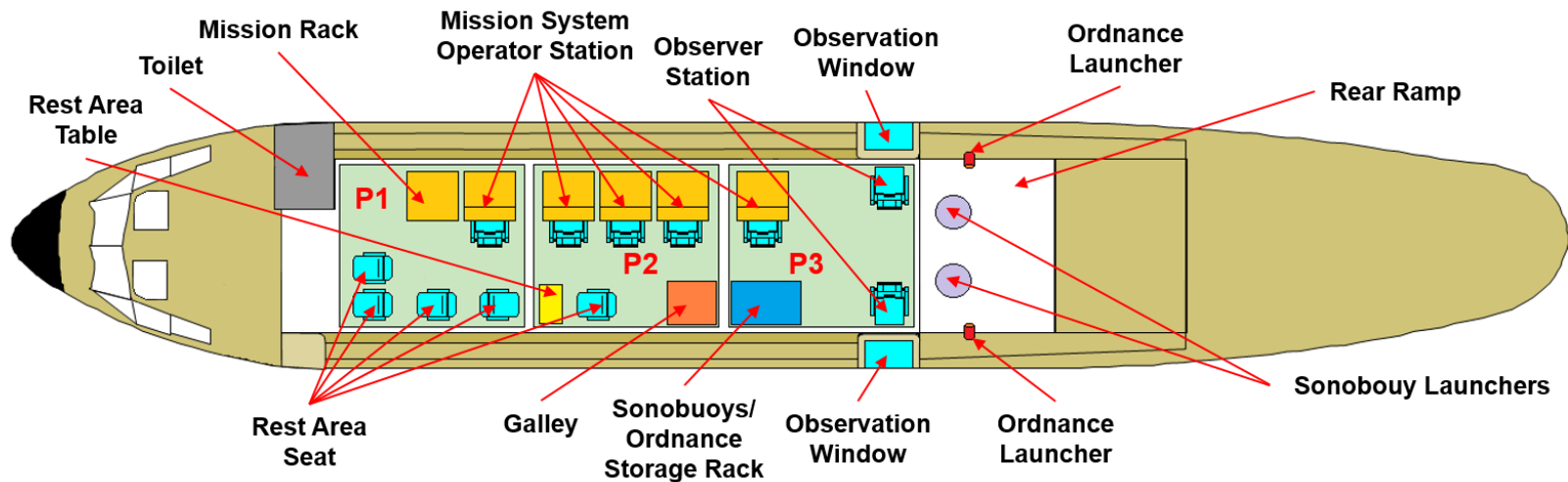
SAR Kit (*)
 (*) released through the Rear Ramp



ASW/ASUW Configuration

- Other features**
- ✦ Underwing pylons for 3,400 kg weapons payload
 - ✦ Removable sonobuoy launchers

- Main sensors**
- ✦ Search radar
 - ✦ IFF interrogator
 - ✦ Electro-Optical turret
 - ✦ AIS
 - ✦ ESM/ELINT
 - ✦ Acoustic system
 - ✦ MAD



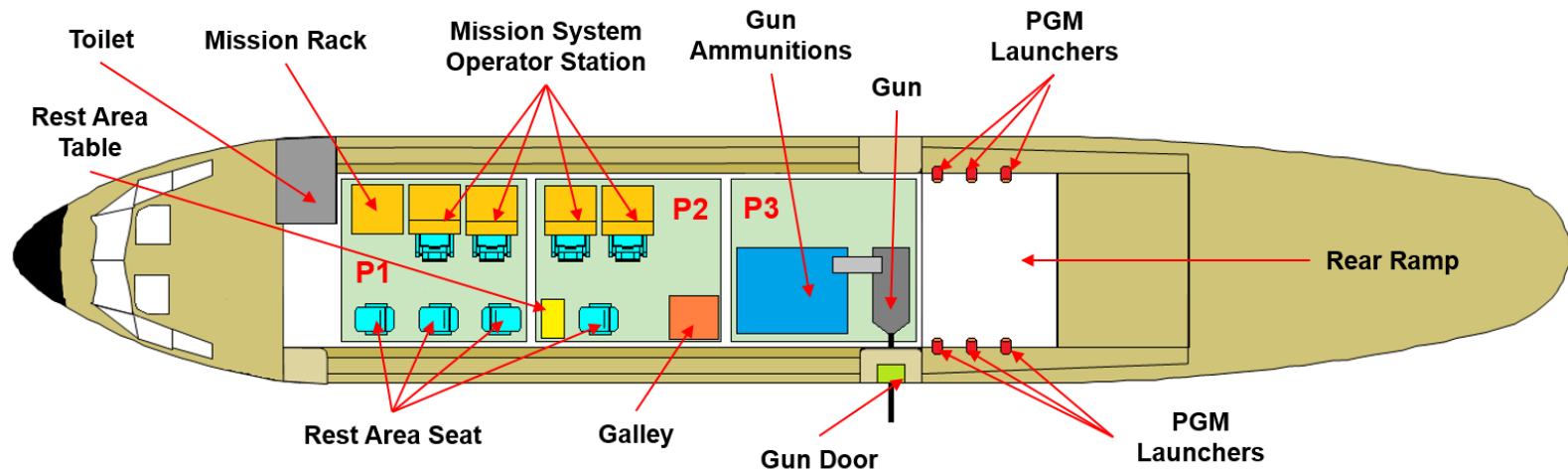


CAS Configuration

Main sensor
 ☼ Electro-Optical turret



Other features
 ☼ 30 mm gun
 ☼ PGM launchers

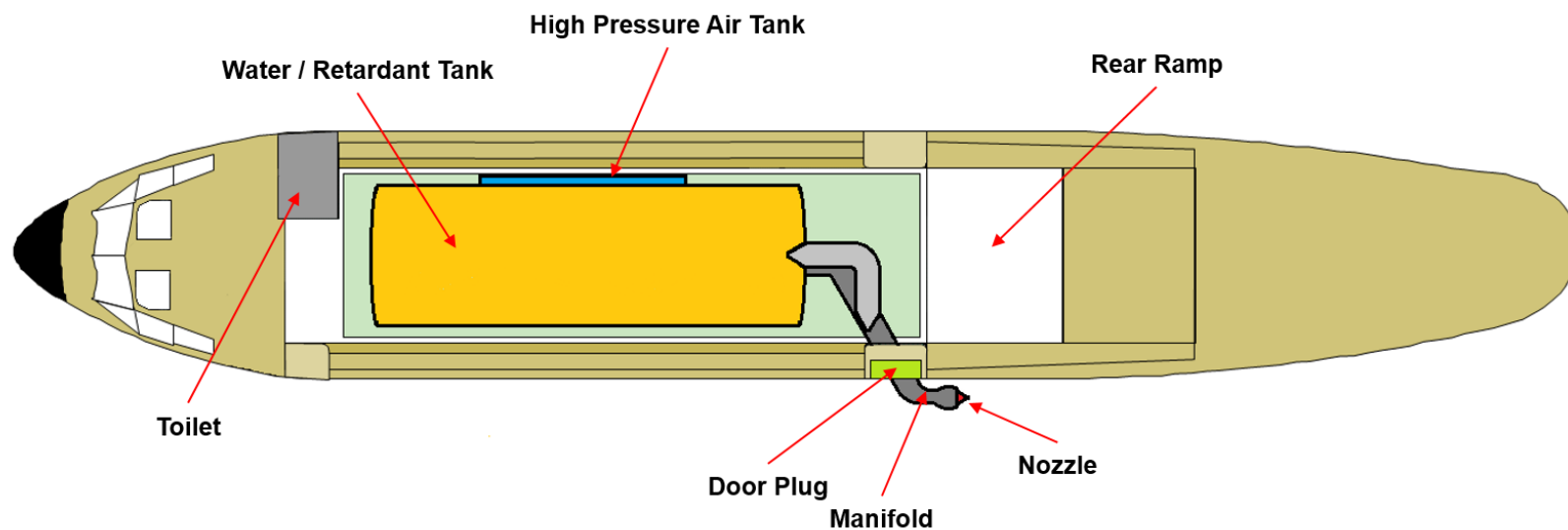
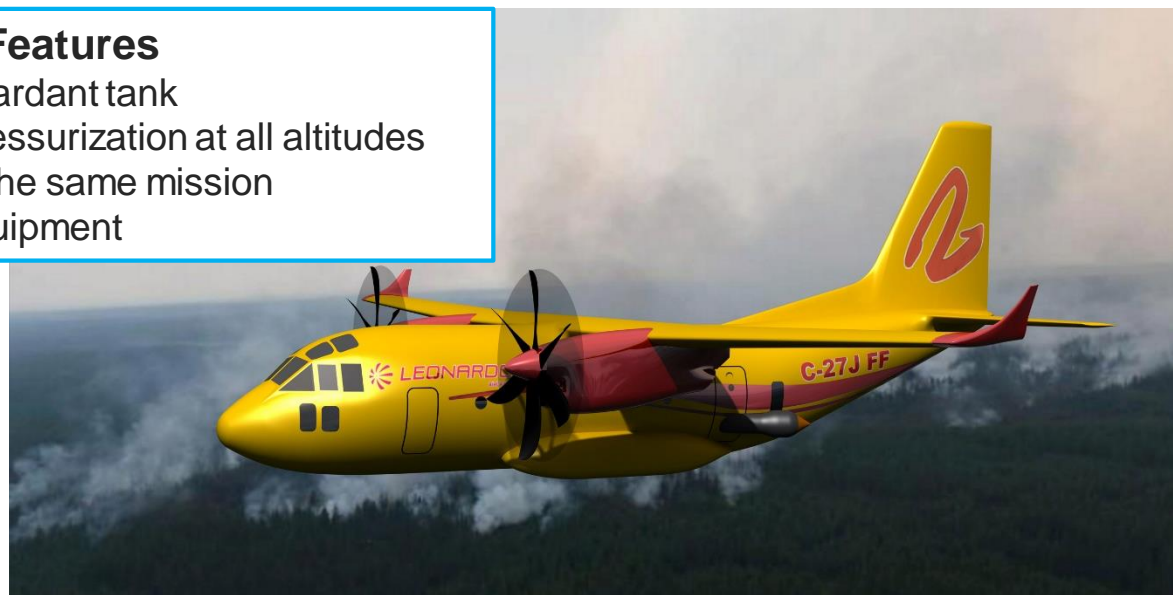




Advanced Fire-Fighting Configuration

Features

- ✿ 8,000 l water / retardant tank
- ✿ Aircraft retains pressurization at all altitudes
- ✿ Multiple drops in the same mission
- ✿ Roll-on/roll-off equipment





**C-27J SPARTAN:
A MULTI-MISSION FLEET IN ONE PLATFORM**





Questions???





THANK YOU
FOR YOUR ATTENTION

leonardocompany.com